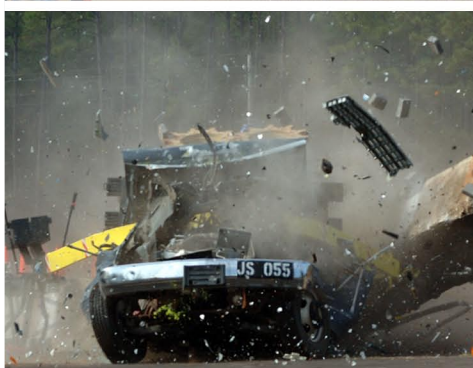


# MODEL DACB-ELE

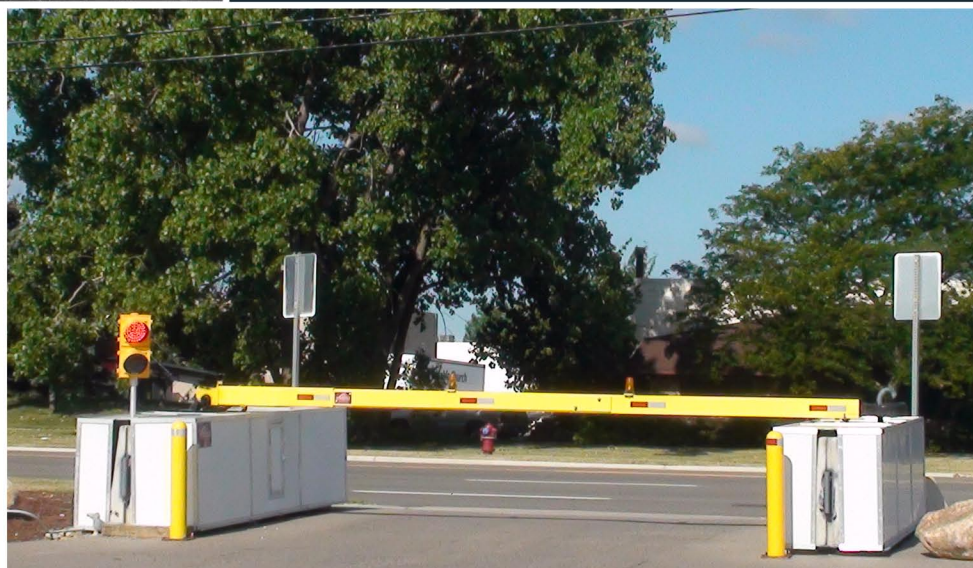
# ELECTRICALLY OPERATED VEHICLE BARRIER DROP ARM CRASH BEAM



- ◆ Raise Crash Beam in 3.0 seconds or lower in 3.0 seconds (rapid cycling).
- ◆ Crash test certified to stop 15,000 lb. vehicle at 50 mph (ASTM M50 certified).
- ◆ Standard 16' wide clear span travel lane for vehicles. Greater spans to 24' available.
- ◆ Surface mounted system avoids excavation.
- ◆ Robust all-weather precision actuator capable of thousands of cycles per day.
- ◆ Panel provided for easy power hookup.
- ◆ Red and green LED traffic lights.
- ◆ Flashing beacon lights on arm and retro reflective striping.
- ◆ Automatic electric locking in down position.
- ◆ Prefabricated and pre-assembled when delivered.
- ◆ Installation completed in about 4 hours.
- ◆ Easily integrated with loop detectors, card readers, up/down controllers, camera and other devices.
- ◆ Aesthetic covers with locking access panels.
- ◆ Minimal maintenance required.
- ◆ Quick disconnect to operate manually.
- ◆ Operational with generator or solar power.

## Product Overview

The Electric Drop Arm Gate Crash Beam provides massive stopping capability, while still rapidly raising or lowering the barrier in 3.0 seconds. Barrier arm has standard 16' clear span, with spans up to 24' available. The vehicle barrier is surface mounted and easily relocated. It is simple to use, all-weather use, and designed for high cycle applications. Traffic signals, loop detectors, controller, card readers, and other devices are easily integrated. Vehicle barrier is delivered prefabricated and assembled, ready to be set.



[www.barrier1.us](http://www.barrier1.us)  
(336) 617-8478 phone (336) 617-8471 fax

Barrier1 Systems, Inc.  
Greensboro, NC USA